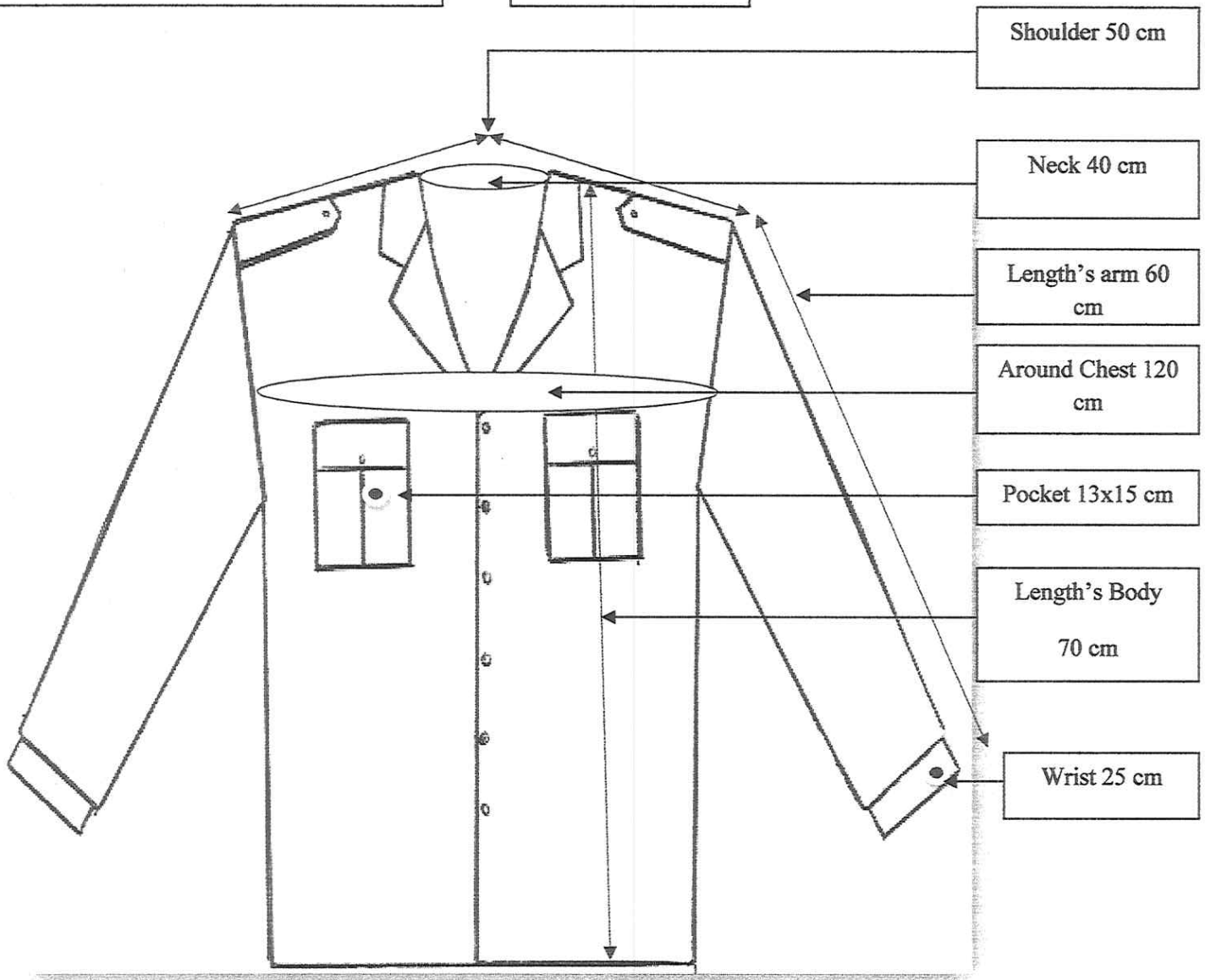


Example Size: L/ Shirt

Front



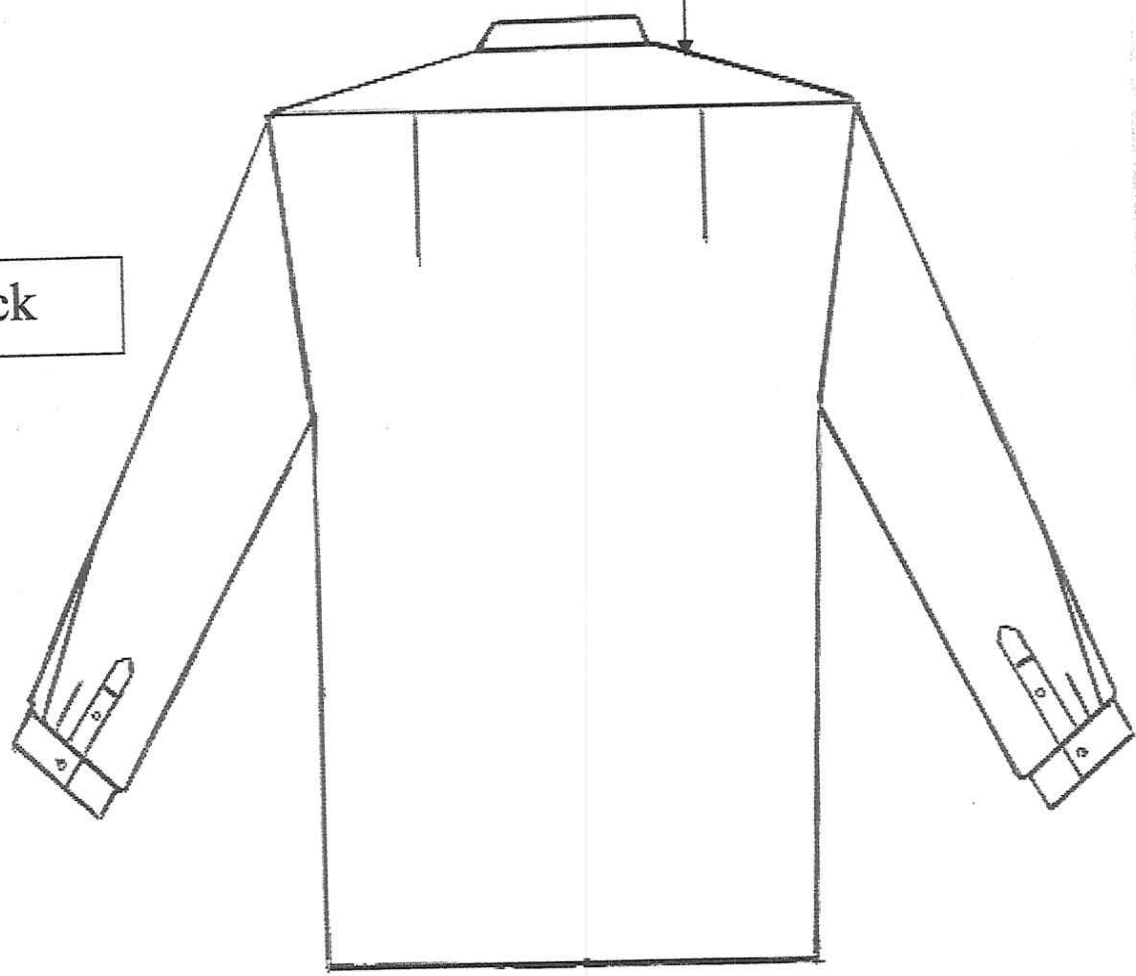
Design's all Uniforms are according to Sizes: S, M, L, XL, and XXL. (Shirt for Uniform).

The Samples with Cotton 70%, Nylon 30%, Color: Light Brown (Kaki)

Example Size: L/ Shirt

Shoulder

Back



Example Size: L/Pants

Around the belt 88 cm

Zipper 72 cm

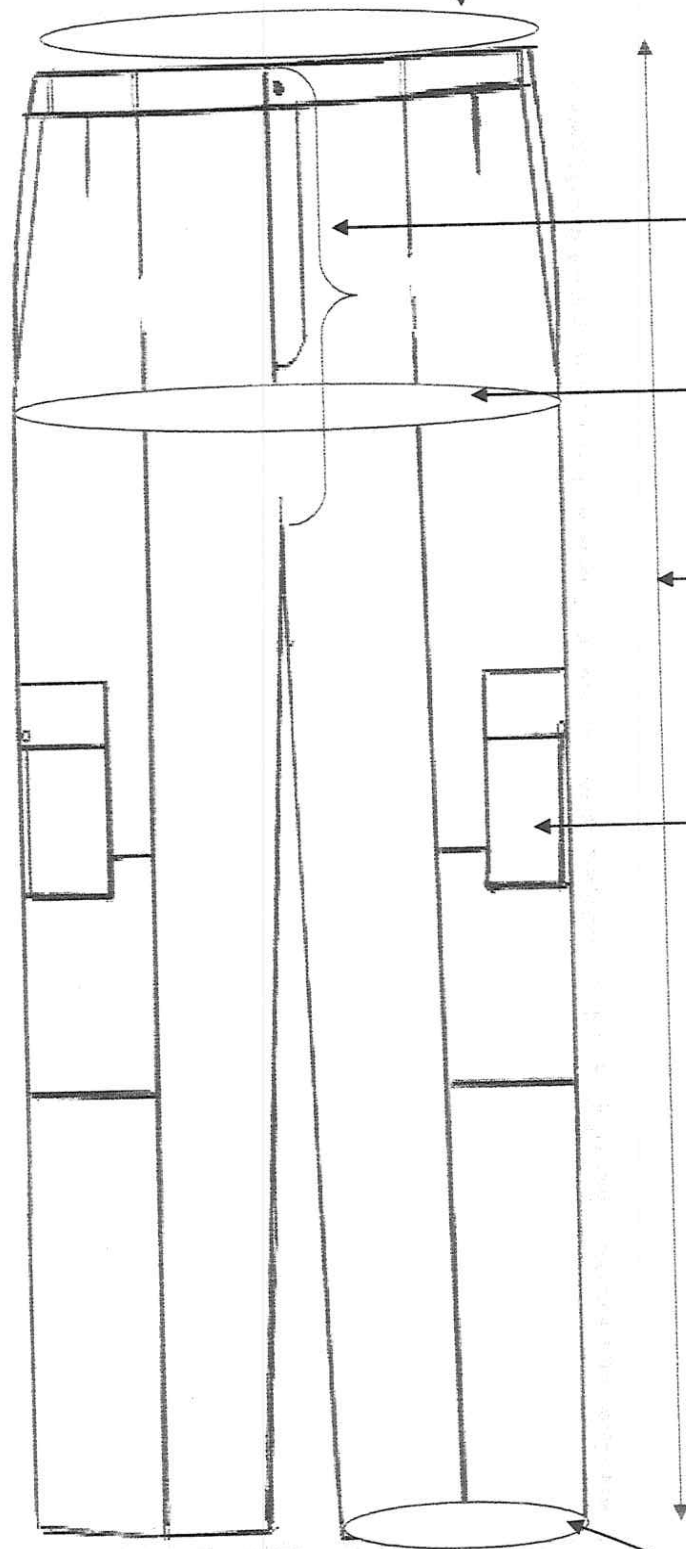
Around Bottom  
116 cm

Length 100 cm

Pocket 20x22 cm

Width of Leg 23 cm

Front



Design's all Uniforms are according to Sizes: S, M, L, XL, and XXL. (Pants for Uniform).  
The Samples with Cotton 70%, Nylon 30%, Color: Light Brown (Kaki)

Example Size: L/ Pants

Back

